



EUROPÄISCHE
JUGENDBILDUNGS &
BEGEGNUNGSSTÄTTE
WEIMAR

KICK-OFF MEETING

From Learning to Impact:
Supporting (Youth) Educators Capacities in
the field of Non-Formal Education

Amarante, Portugal | 4th – 10th of April 2022

PROJECT DESCRIPTION

The project focuses on simple but crucial question: how to create and shape learning in order to define and achieve impact in cooperation with the target groups. And in order to be able to achieve and to measure impact we have to really understand the process of learning.

In order to achieve that we have developed a series of tailor-made European seminars and trainings which aim to provide a solid profile for the group of participants. The seminars and trainings will enhance the profile of people and organizations and will build on their experiences and needs as educational practitioners but also develop a definite schedule for providing an overarching horizon of developing competences both in the field of education and European youth education explicitly.

Even more importantly, we would like to make available academic and other knowledge that is sometimes not available to certain groups of our society because the formal system excludes certain groups. This project is an attempt in offering training to a target group that would otherwise not be able to acquire this type of experience. What is more, we believe that this project, as it is operating under non-formal settings, allows for a much closer learner centered approach and thus allows for a more sustainable and lasting impact.

In detail, the following sub-objectives can be derived from this:

- To increase the quality of learning spaces being offered by non-formal educational actors and as a result to make non-formal educational activities more professional and measurable.
- To increase significantly understanding of impact measurement and the implementation of measuring impact in general.
- To ensure the participation of disadvantaged youth and young adults in international mobility projects.
- To deepen the understanding of learning processes in order to make it more natural and interesting, therefore more gainful and successful.
- To bring to light a more professional NGO activism that can truly support and inspire young people. As well as this, we expect the participating organizations to deepen their collaboration in order to implement bigger projects.

The project starts with **a kick-off meeting**, in which existing learning theories will be discussed and elaborated according to practices and experiences of educators and other experts involved (A1); based on the findings of it, **a training course** (A2) will give the opportunity to shape, design, practice & reflect learning processes according to the needs and interests of the educators; **seminar** (A3) will focus on theories and practices of evaluation and impact (individual, organizational and systemic). The conclusion of the project - **closing event** (A4) - will give an opportunity for those involved to step back, to harvest as well as to go further in future planning and cooperation.

All planned events are accompanied by a series of online activities in order to prepare as well as process the findings of the implemented activities.

PARTNERS INVOLVED

1	Armenia	Barekamutyun Educational Cultural NGO
2	Austria	Plattform Generation Europa
3	Germany	Stiftung Europäische Jugendbildungs- und Jugendbegegnungsstätte Weimar
4	Azerbaijan	COMMON SENSE YOUTH ORGANIZATION
5	Spain	Foro Joven Toledo
6	Cyprus	Politistiko Ergastiri Ayion Omoloyiton
7	Romania	Institutul pentru Cercetare și Educație Multilaterală a Tinerilo
8	Russian Federation	The Association of Indigenous Peoples of the North of the Khabarovsk region
9	Portugal	AVENTURA MARAO CLUBE
10	Latvia	Izdzivo ideju

11	Georgia	Civic Initiatives Association
12	Italy	ASSOCIAZIONE CULTURALE EUFEMIA APS
13	Germany	JugendSozialwerk Nordhausen e. V.
14	Greece	SOCIAL YOUTH DEVELOPMENT CIVIL NONPROFIT SOCIETY
15	Palestine	Witness Center for Citizen Rights and Community Development "Shahed"
16	Jordan	RBK
17	Egypt	Madad for Information Technology

KEY INFORMATION

The overall project foresees a series of educational events to discuss, share, build on and focus on key topics that interest the participants but also support active individuals such as **youth leaders, trainers, facilitators, activists and young entrepreneurs** in developing further their profiles as individual educators and creating a change in their community through education.

TRAVEL COSTS

We will reimburse the travel costs on the basis of the cheapest possibilities, e.g. second class railway tickets, APEX-flights etc., within the provided limit, from their place of origin to the venue of the activity and return, accompanied **ONLY by original and/or electronic documents** (tickets, invoices, bookings, boarding passes etc.). Travel by car is reimbursed with **0,20 € km/car** (proof by google maps print showing the shortest & most direct route). In the table below, you can find the maximum contribution for travel costs for ONE person per country **from hometown to Amarante and back** including **COVID-19 testing and travel insurance costs**.

Furthermore a **financial contribution** from each participant is required upon individual situation & decision:

- Reduced fee 25,00 €
- Standard fee 50,00 €
- Solidarity fee 75,00 €

Country	Partner Organization	Number of participants	Max. contribution per person	Visa Costs
Armenia	Barekamutyun Educational Cultural NGO	1	820€	150€
Austria	Plattform Generation Europa	3	275€	-
Germany	Stiftung Europäische Jugendbildungs- und Jugendbegegnungsstätte Weimar	5	275€	-
Azerbaijan	COMMON SENSE YOUTH ORGANIZATION	1	820€	150€
Spain	Foro Joven Toledo	2	180€	-
Cyprus	Politistiko Ergastiri Ayion Omoloyiton	2	360€	-
Romania	Institutul pentru Cercetare și Educație Multilaterală a Tinerilo	2	360€	-
Russian Federation	The Association of Indigenous Peoples of the North of the Khabarovsk region	1	820€	150€
Portugal	AVENTURA MARAO CLUBE	3	180€	-
Latvia	Izdzivo ideju	2	360€	-
Georgia	Civic Initiatives Association	1	820€	-
Italy	ASSOCIAZIONE CULTURALE EUFEMIA APS	2	275€	-
Germany	JugendSozialwerk Nordhausen e. V.	2	275€	-
Greece	SOCIAL YOUTH DEVELOPMENT CIVIL NONPROFIT SOCIETY	2	360€	-

Palestine	Witness Center for Citizen Rights and Community Development "Shahed"	1	530€	150€
Jordan	RBK	1	820€	150€
Egypt	Madad for Information Technology	1	530€	150€

NOTE TO PROJECT PARTNERS:

Please take in consideration, that we can use money which we did not spend on travel reimbursements also for excursion and additional activities – booking tickets early helps us to add new offers to our program.

The participation fee (“reduced”, “standard” or “solidarity”) can be paid in the following two ways: rather in **cash during reception & registration on the arrival day OR beforehand by bank transfer** to the following account:

Stiftung EJBW
 IBAN: DE80 8205 1000 0301 0250 02
 BIC: HELADEF1WEM Sparkasse Mittelthüringen
 Subject: 9_2025_A1_Country_Name(s)

Please note: The amount cannot be reduced from the travel cost reimbursement. Please inform us in advance which of the both mentioned options you are planning to use AND if you are paying as individual or as an organization.

ENTRY REQUIREMENTS

General information about travelling in Europe can be found at the EU's [Reopen EU](#) website, but please note that this page is not as often updated as pages below.

In order to make travelling go smoothly we strongly recommend participation to those **fully vaccinated. As unfortunately, we will not be able to provide quarantine before or after the event.** Therefore, when planning and preparing for your travel, we strongly recommend informing yourself carefully about the latest developments and regulations as situation is changing every day. Information on entry restrictions in **Portugal** can be found here:

<https://www.visitportugal.com/en/content/covid-19-measures-implemented-portugal>

As a part of your planning and preparation, please make sure that your **travel insurance covers COVID-19** related situations and expenses, and advance it if necessary. Having travel insurance has been proven to help travelers with financial support and comfort to continue their journey without worries. We will not be able to cover any of those expenses should there be any delays, travel changes or quarantine related costs.

All passengers who will enter Portugal, regardless of the country of departure and the nationality of the travelers, for the moment of 28th January 2022, will have to fill in a digital passenger locator form a **Passenger Locator Form (PLF)** (<https://portugalcleanandsafe.pt/en/passenger-locator-card>). The form can be submitted within **4 days prior** to arrival in Portugal. Once submitted, you will receive a notification that you should keep with you, digitally or printed, during your trip. Every individual will have to fill in a separate **PLF**, even if traveling as part of a group.

As well as this all travellers have to provide either:

- NAAT - Nucleic Acid Amplification Tests (RT-PCR, NEAR, TMA, LAMP, HDA, CRISPR, SDA, etc.), carried out the last 72 hours prior to boarding;
- Rapid antigen tests performed within 48 hours prior to shipment.
- Certificate of Recovery from COVID-19.

Self-tests, of any kind, are not accepted.

You can get more information regarding these and other restrictions that apply upon arrival here:

<https://www.ana.pt/en/passenger-guide/what-you-need-to-know/covid-19>

Regarding the vaccines that are authorized in Portugal and European Union please refer to this link:

<https://www.ema.europa.eu/en/human-regulatory/overview/public-health-threats/coronavirus-disease-covid-19/treatments-vaccines/vaccines-covid-19/covid-19-vaccines-authorized>

SAFETY MEASURES

EJBW and its cooperation partners will ensure that safety and hygienic measures needed in relation to Covid-19 Pandemic are in place during the activity. In activities, we use facemasks and safety distance, or the safety guidelines, which are valid at the time of the event at the respective place of activity.

EJBW and the hosting place will follow and apply all COVID-19 health and safety guidelines by the national government, health departments, federal states and regional governments, which are valid by the time of the event at the respective place.

Following rules and safety measures apply in the hostel in order to prevent the spread of coronavirus disease and make your stay safe:

- Measuring temperature on a daily basis;
- Using masks during all project activities and inside buildings and local transports;
- Rooms with reduced number of beds and own individual safety products (gel or alcohol, toilet and cleaning paper, etc.);
- Bathrooms are organized in order to have the same participants always in the same showers/toilets (each room will have a shower/toilet in the bathroom);
- All meals (breakfast, lunch and dinner) will be made in a reserved area (without any other clients besides our staff).

CHECK LIST FOR TRAVEL REIMBURSEMENT

1. Train/Bus tickets

It is important that the **arrival and departure times** as well **as the price** are visible (+invoices if available).

2. Regular air tickets must be accompanied:

- by the **original invoice** (signed and stamped)/receipt/pay order/proof of payment;
- the **boarding pass** (the small ticket stub you receive before boarding the plane);
- the **price** stated in the invoices, receipts etc. must **coincide** with the price on the ticket.

E-Tickets must be:

- **printed out** and include your **name , the exact fare you paid, details of your flight**;
- given with regular or electronical **boarding pass** (be sure to save your electronical boarding pass in advance).

Travel insurance costs

- the original invoice (signed and stamped)/receipt/pay order/proof of payment;

COVID-19 test costs

- the original invoice (signed and stamped)/receipt/pay order/proof of payment;

NOTE: Some airlines print “passenger receipt” at the top of the cardboard ticket. It is not accepted as a receipt of the proof of payment. Therefore, if you book your tickets online, please, make sure to print out the e-mail you receive from the airline company upon the payment, stating how much and how you paid.

Other important details:

- Missing or lost tickets/original invoices are not reimbursed.
- Tickets booking paper alone is not enough.
- Any **costs** for **taxi are not reimbursed.**
- Return tickets must be bought in advance before the journey.

Following the guidelines of the program and internal regulations, the travel must be released by the participants on the direct way within maximum 2 days. In case of long pauses or indirect routes (holiday travel), there is no reimbursement of travel costs!

Reimbursement is done in Euro.

After the event (the Kick-Off Meeting) please send us back all your complete travel documents **in ORIGINAL** by post mail as well as your bank account details (name of account holder, name of the bank, IBAN code, BIC/SWIFT code, proven by a bank document) to:

**Europäische Jugendbildungs- und
Jugendbegegnungsstätte WEIMAR (EJBW)**
Markus Rebitschek
Jenaer Str. 2/4
D-99425 Weimar
Germany

TRAVELLING TO AMARANTE**Plane (Porto)**

Amarante is 70km away from Porto's airport (OPO), so would it take approximately 45 minutes to bring you to the hostel. Tickets can be checked at <https://www.busradar.com/>, <https://rede-expressos.pt/> or <https://www.busbud.com/en>.

Plane (Lisbon)

Lisbon is 377km far from Amarante. Then you can take a direct bus to Amarante. The bus main station is 10 minutes far from the hostel. Tickets for this option can be checked as well at <https://www.busradar.com/>, <https://rede-expressos.pt/> or <https://www.busbud.com/en>.

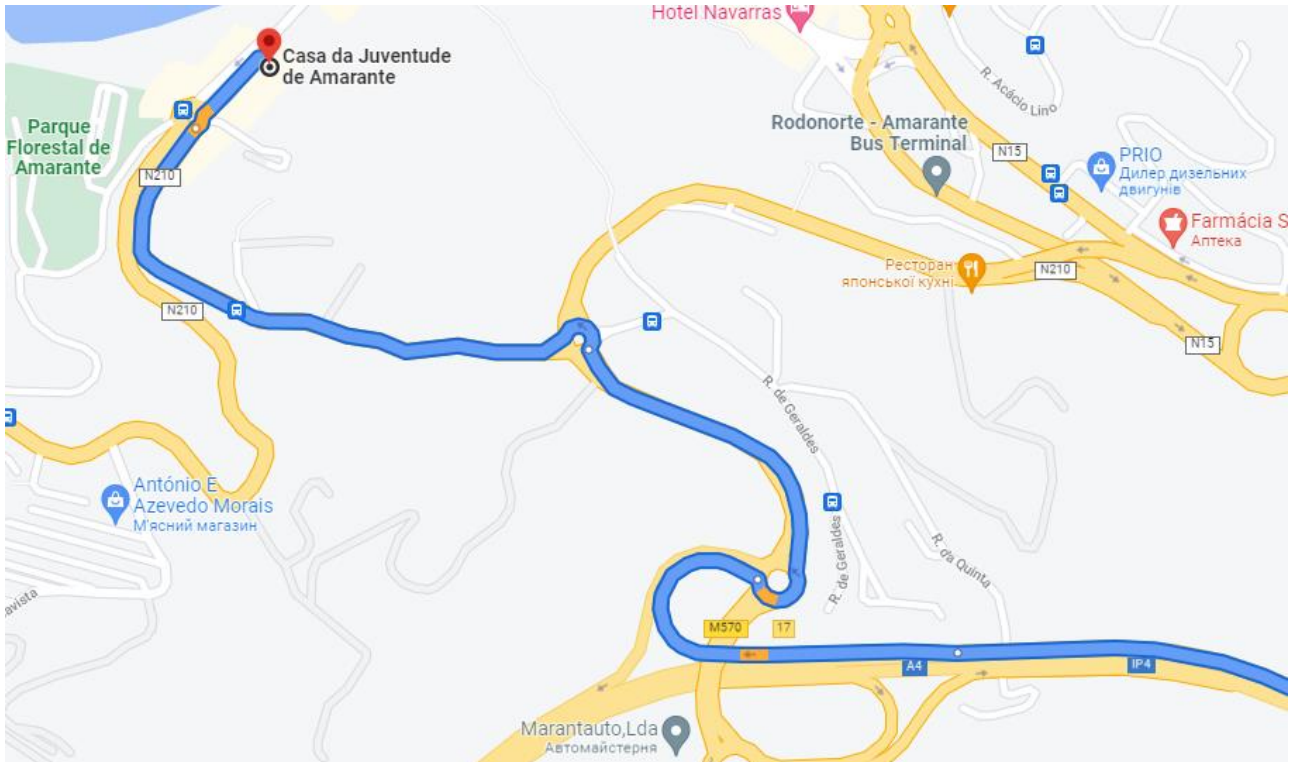
Pick up service can be organized by the hostel upon individual request only in case public transportation is not possible due to very late or very early arrival.

Bus

Check the best option from your location to Weimar or use FLIXBUS www.flixbus.com to reach the place. You can also check for alternative connections via Go Euro www.goeuro.com as well as <https://www.thetrainline.com/>.

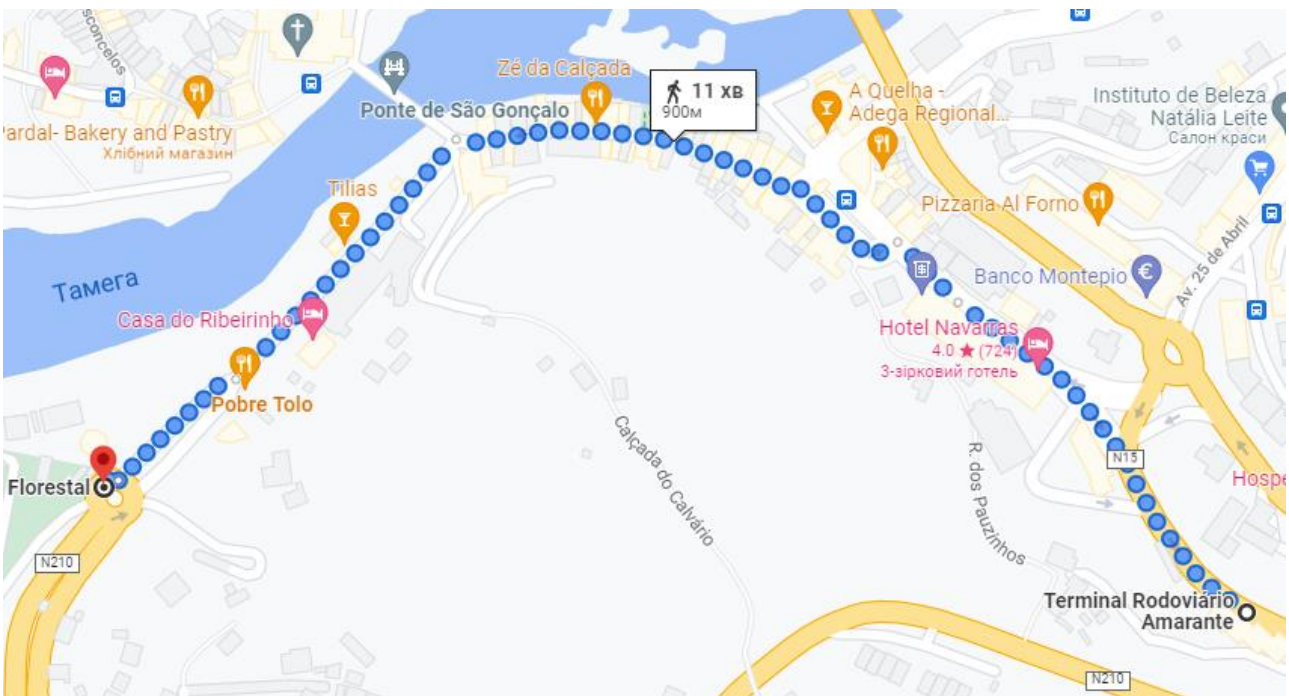
Car

The fastest route from the side of Spain lies through motorway A4. After entering the city in the street of A.Transmontana you will need to change to route M570 via big round road junction. After that go to N210 at R.Antonio Lago Cerqueira and follow it straight up to the circle. After that take the road that leads to Av.Gen.Silveira. The address of the hostel is **Av. Gen. Silveira 193, 4600-017**. It will be on your right.



In Amarante

If you have found yourself at the main station of Amarante and think how to get to the hostel, you can use this app: <https://rodoamarante.pt/>. There you can download and check the schedules of busses that go to bus stop **Florestal**. Bus line numbers are S2, E2 or U3. However, if you fancy a walk and the weather is nice, you can also walk to the hostel.



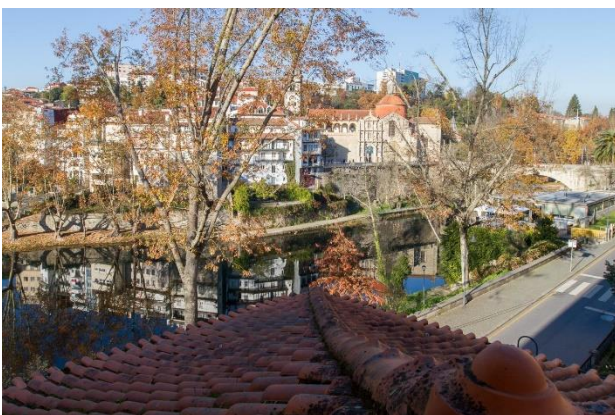
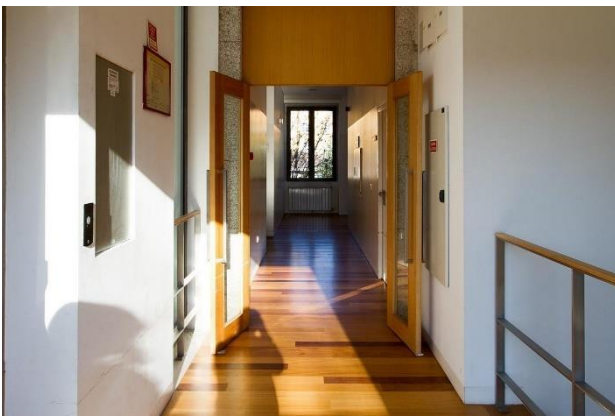
ACCOMMODATION IN AMARANTE

Casada Juventude de Amarante is a local youth centre and hostel. They started in 2008 and were the first and only private establishment of this kind in Portugal. Therefore, they have chosen a strategy of supporting local youth initiatives to connect with youngsters and their values. Their approach is based on sustainability, equity and dialogue.

To stay in the hostel and attend surrounding amenities you have to present **certificate of vaccination against COVID-19** in either digital or printed form.

The meeting will be organised according to the current guidance of helping to prevent the spread of COVID-19. Please provide yourselves with suitable amount of masks.

Accommodation is provided in double rooms with shared bathrooms (separate for men and women) on the floor. Bed linen and towels are provided as well.



TEAM



If you want to go fast, go alone.
If you want to go far, go together.

As a trained and certified pedagogue, working in the field of education since 2010, **Wolfgang Sieberth** has been involved in planning, managing and evaluating educational projects.

He is currently employed at Kinderinsel (pedagogical conceptualization and realization of early childhood pedagogics) and at Generation Europa (CEO). He has been publishing in the field of observational studies. His blog as one of many projects can be reached via this link: www.worldcitizen.at

Hanna Aheyeva is a freelance project manager, facilitator and capacity building advisor. She works with CSOs and initiatives in EU, Eastern Europe and Central Asia.

Her background in leading a youth educational center in Minsk and coordinating of Young European Ambassadors initiative in Belarus helps her to create practice-oriented educational programs that meet the challenges of the region.

As an artist she uses creative approach in her educational work, running painting workshops and programs in art activism.



Daniele Nubile is a freelance trainer, who has been active in Non Formal Education since 2011.

Throughout the years and between Italy and Germany, Daniele has worked and developed competences in the field of European youth work with different roles, as Tutor for volunteers and trainees, project coordinator and now as a trainer.

While creating, designing and implementing projects, his focus is on learning processes and empowerment of individuals.

PROGRAM OF KICK-OFF MEETING (Amarante, 04.-10.04.2022)

The flow of the activity in Portugal will be oriented towards a Self-Directed Learning process. Hence, the aim of the facilitators is not to provide a detailed programme, but rather to provide the frame in which all participants can tailor their own learning experience according to their own needs, interests and objectives.

04.04.2022	05.04.2022	06.04.2022	07.04.2022	08.04.2022	09.04.2022	10.04.2022
	BREAKFAST	BREAKFAST	BREAKFAST	BREAKFAST	BREAKFAST	BREAKFAST
ARRIVAL & CHECK-IN	Opening/Introduction/ Alignment	Introduction: What is Learning?	Introduction: Learning and Neuroscience	Self-Directed Learning	Self-Directed Learning	DEPARTURE
	Expectations/ Orientation/ Contributions	Introduction: What is learning?	Embracing new insights	Self-Directed Learning	Self-Directed Learning	
	LUNCH	LUNCH	LUNCH	LUNCH	LUNCH	
	Teambuilding	Me and Learning	Learning and Psychology	Self-Directed Learning	What's next? Transition Phase 1	
	Teambuilding/ Reflection	Conclusions and reflection	Embracing new insights	Self-Directed Learning	Evaluation and closing	
DINNER	DINNER	DINNER	DINNER	DINNER	DINNER	
Welcome Evening						

PROJECT PARTNERS

Armenia



Austria



Azerbaijan



Cyprus



Egypt



Georgia



Germany



Germany



Greece



Italy



Jordan



Latvia



Palestine



Portugal



Romania

ICEMT

Russian Federation



Spain



WITH SUPPORT OF



Kick-Off Meeting

“From Learning to Impact: Supporting (Youth) Educators Capacities in the field of Non-Formal Education”

4th – 10th of April 2022 (Amarante, Portugal)

Stiftung »Europäische Jugendbildungs- und Jugendbegegnungsstätte Weimar« (EJBW)
European Youth Education and Meeting Centre in Weimar
Markus Rebitschek
Jenaer Straße 2/4
D-99425 Weimar (Germany)
Fon +49 (0) 3643 827-0

Legal notice

Text: Markus Rebitschek

Layout:

Photos: p.8 (courtesy of Casada Juventude de Amarante), p.9 (photo of Wolfgang Sieberth by Chloé Michel, Daniele Nubile by Sven Görgens and Hanna Aheyeva by Kate Ignashevich).

Cover: <https://www.pexels.com/de-de/foto/wall-e-spielzeug-auf-beige-pad-2103864/>.

Weimar, February 2022